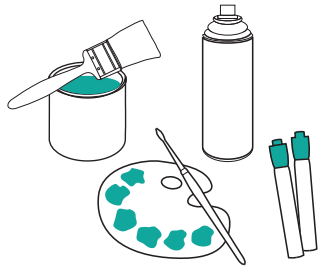
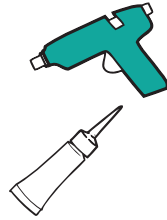


**WARNING: NEVER UNSCREW BULBS OR SCREW BULBS INTO SOCKETS WHILE PLUGGED IN!  
CONNECTING MORE THAN (4) 18" LETTERS IS NOT RECOMMENDED  
DO NOT CONNECT OTHER APPLIANCES TO YOUR LETTERS**

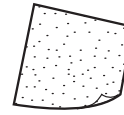
You'll need the following:



Painting Medium



Glue



Sand paper



Creativity

**STEP 1**

Your DIY Marquee comes with the bulbs secured in their sockets. You are going to need to remove them to be able to decorate your letter. Make sure to place them on a level surface, somewhere safe.

**STEP 2**

The letter is primed and sanded so you can use any kind of coloring or painting medium you would like. Such as spray paints, acrylics, enamels, latex, watercolors, Rit Dye, markers or inks.

**STEP 3**

When decorating make sure holes do not get filled with paint. This can make it difficult to get the sockets back into the holes. If this happens just use a q-tip to clear the holes free of excess paint. If the paint has dried use your sandpaper to remove it.

**STEP 4**

Put the sockets back into the holes and secure them with glue on the back and around the collar. You can use super glue, glue gun or epoxy to glue the sockets to the wood holes. Screw your bulbs back into your letter and you are ready to plug it in!

**HELPFUL TIPS**

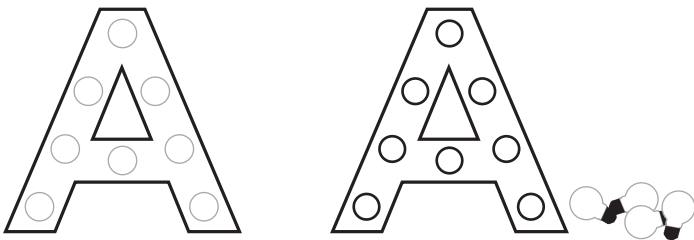
Your DIY Marquee is recommended for indoor use only. Prolonged exposure to outdoor elements can cause the wood to weather.

If you are going to use Rit Dye, use liquid undiluted works best for coloring your letter.

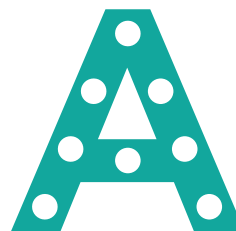
Rolling it up or wrapping the sand paper around a pencil works best to remove dried paint from holes.

Try using wasabi tape to decorate your letters.

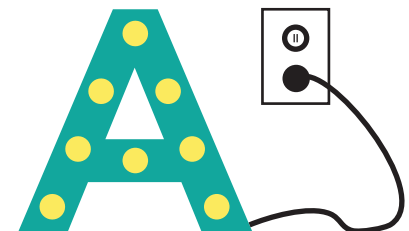
1-2



3



4



**DIY MARQUEE**

**\*INSTRUCTIONS & SAFETY PRECAUTIONS\***